

# TPL NET Network Module

## Installation and User Manual



Issue Date: 25/06/2013

### IMPORTANT NOTIFICATIONS

#### GENERAL

- ✓ Before operating devices, read carefully this manual and save it to use later.
- ✓ Read all notifications and protections carefully that is written in this manual. Apply all management and using instructions respectively.
- ✓ Keep devices away from water and humidity.

#### ENVIRONMENT CONDITIONS

Do not operate the device out of the limits which are described below.

Temperature: between 0°C and +65°C

Humidity: %95 at +40°C

#### SERVICE

Do not attempt to repair device yourself. You may expose to electrical shock if you open the cover.

In case of any malfunction please contact your dealer or authorized service. Technical response to the device must be performed by qualified service personnel.

#### CONDITIONS REQUIRING TECHNICAL SERVICE

Please contact your authorized service or dealer in case of any malfunction or following cases happen.

- ✓ If the power cord or plug is damaged,
- ✓ If any fluid flows or something falls into the device,
- ✓ If exposed to water or rain,
- ✓ If device dropped or the cover damaged,
- ✓ If there is a noticeable performance change on the device,
- ✓ If the device do not operating due to management and using instructions that are described in manual,
- ✓ Since wrong operations may occur new malfunctions please contact the authorized service.

#### SPARE COMPONENTS

Be sure technician use original or equivalent component due to risk of electrical shock of another malfunction if repair process will be realized by changing components.

#### SAFETY CHECK

In order to check if the device operating in secure conditions or not, request technical service from your authorized dealer.

#### SPECIFICATIONS\*

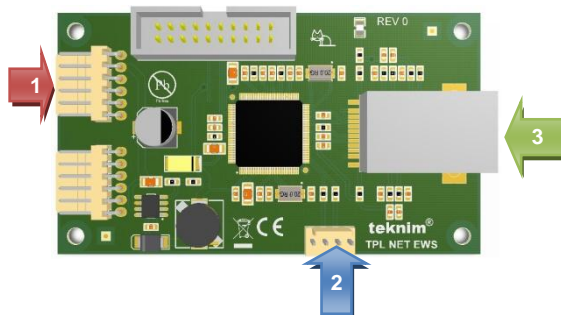
TPLNET module provides to access and control all VAP series alarm panels over network, internet, and intranet via VAPMan software.

Supported Velocities:	10/100 Mbps
Power Supply	12 V DC, 50mA
Username	admin
Password	123456
DHCP Support	Yes

\* Technical specifications may be changed without notification.

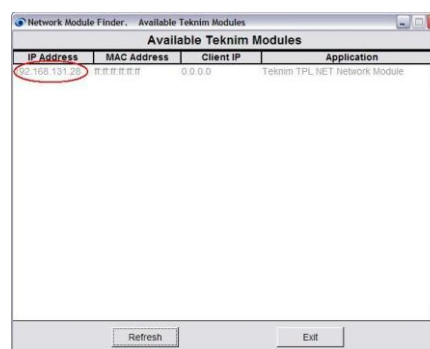
### MOUNTING

1. Turn down the energy of the panel completely,
2. Place the TPL NET card coincide with the holes on the printed circuit board carriers.
3. Stabilize the TPL NET card to the panel by using 4 screws that are inside the box and 4 mounting hole,
4. Plug one side of the connection cable of 4 which is ready inside of the TPL NET box, to socket on the TPL NET board that is shown by blue arrow (2).
5. Plug one side of the connection cable of 6 which is ready inside of the TPL NET box, to socket on the TPLNET board that is shown by red arrow (1).
6. Plug the other side of connection cable of 6 to the expansion connector of 6 on the panel.
7. Plug the other side of connection cable of 4 to slot on the panel. (Slot location on electronic card may vary depends on type of the panel)
8. Insert the network cable (RJ-45 male connector) to the socket on TPL NET which is shown by green arrow (3).
9. Turn on the energy of the panel again.



### LEARNING IP ADDRESS OF THE DEVICE

As you can learn the IP address of the device via DHCP server, you can also set by the program CD which is giving with device located on "TPLNET\_FINDER.exe". When this program runs, it scans automatically the modules on your program network and lists them.



### CONFIGURATION

TPL NET module is set as DHCP ON in factory. It means if you have a DHCP server in your system, TPL NET takes its IP automatically and starts operating without any setting. Green light on the RJ45 connector shows existence of network connection (electrically), yellow light shows existence of communication.

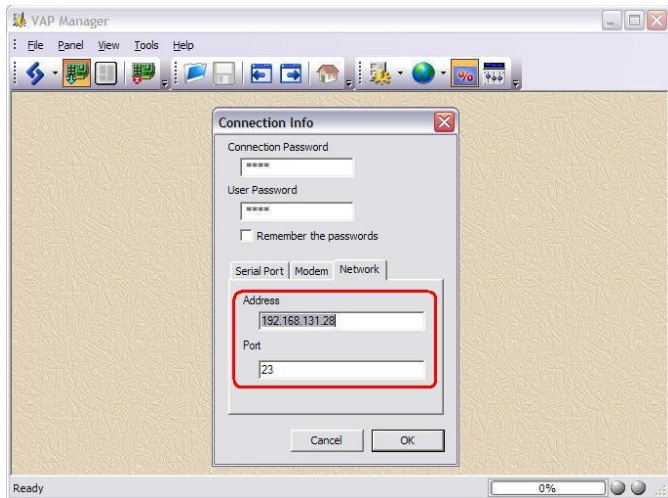
## INTERNET ACCESS TO IP ADDRESS OF THE DEVICE

In order to access your TPL NET module on your local network via internet, if you are using an ADSL modem, port forwarding process is necessary. As factory default, TPL NET module uses port 23 to communicate to VAPMAN and port 80 to communicate to web interface. Port forwarding. Due to port forwarding, requested connections to your internet IP 23 must be forwarding to same port of the module on your local network.

In order to make this adjustments use the manual of your modem or take an advise from a specialist.

## CONNECTION TO VAPMAN SOFTWARE

You can realize all operations with TPL NET module by connection over network. To set necessary connection, entering the IP address and port to the connection dialog is enough. Connection dialog window is shown below.

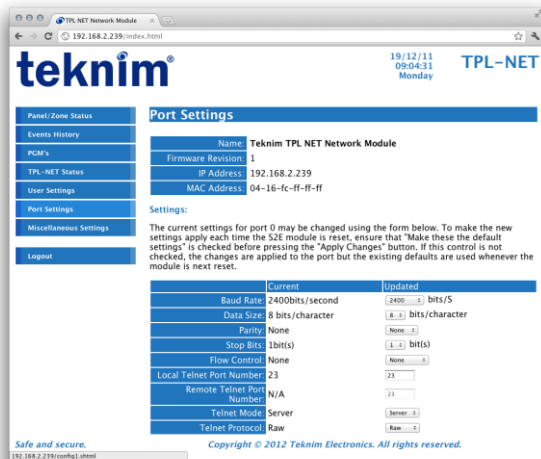


Please analyze VAPMAN manual to get information about using VAPMAN software.

## ACCESS TO MODULE SETTINGS

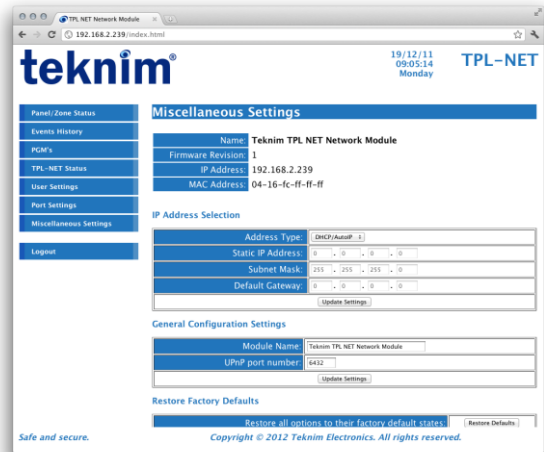
**WARNING !**  
 Factory settings are shown below and these settings can't altered. Any change on these settings may occurs module does not oprate as expected.

You can access the monitoring and configuration screen after you enter your username and password when you type the module's IP, which seen in "Teknim Finder" program, to the address bar of any web browser. The page you will see is synoptic and you can reach current configuration and panel condition.



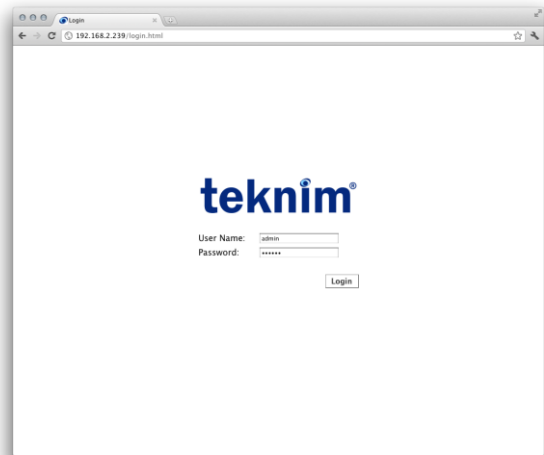
You will toggle to serial port setting page of module by clicking to "Port Settings" part in the left. The factory settings of the device is 2400 baud 8N1.

Network settings are in the "Miscellaneous Settings" page.



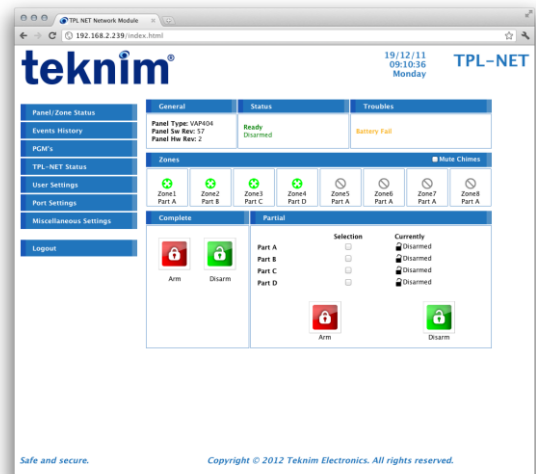
If DHCP is not desired to use, it can be cancelled on that page and desired IP can be given.

## ENTRANCE TO WEB INTERFACE











When IP address is typed entrance page will appear. By submitting username and password you can reach other monitoring and control screen. In factory settings, **username: admin password: 123456**

## PANEL CONDITION AND ARMING/DISARMING



You can reach that screen over Panel / Zone Status link. Type of panel, hardware and software versions, panel condition and error codes can be observed on that page.

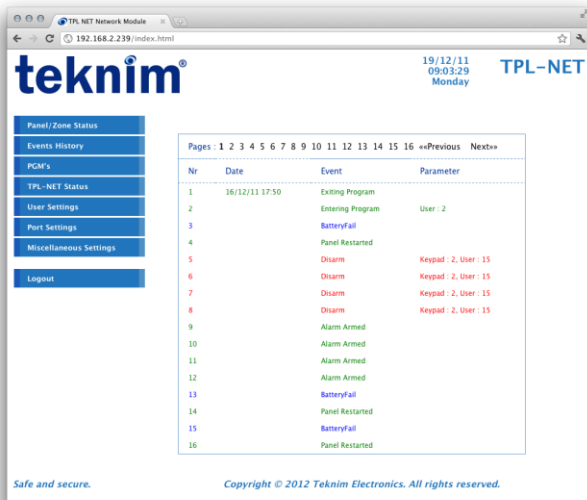
Zones are opened for using , motion sensed zones , alarming zones , set zones , zones are closed for using , error sensed zones  presents by these icons.

To arm all zones of panel click  under "complete" header. To disarm all zones click . To arm specific zones, mark the "Selection" box which is belong to modifying zone and press arm to arm and press disarm to disarm. That is the way to arm and disarm the selected zones.



The icon of an armed zone is  and a disarmed zone is .

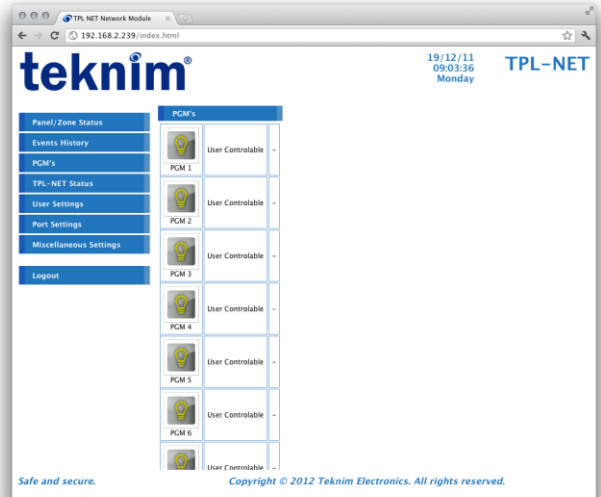
### EVENT LOG

You can use Events History button for accessing and glancing event log over web interface. In order to surf around the page you can use numbers or "Next" for next page and "Prev" for previous page.



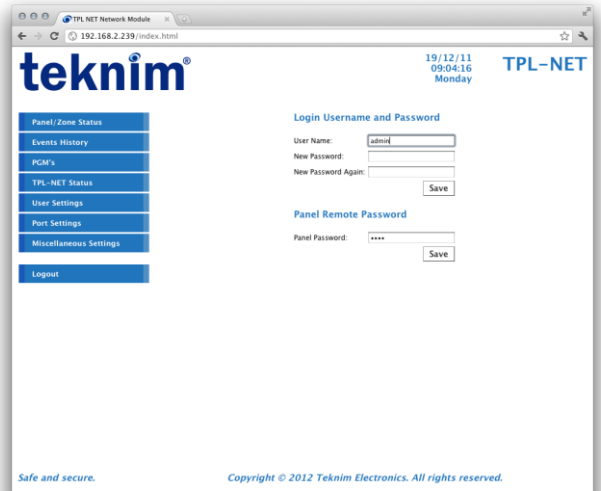
### MONITORING AND MODIFYING PGM CONDITIONS

You can monitor and modify PGM situations under PGM's button. Active PGM presents by  icon and deactivate PGM presents by  icon. To change PGM situation click that icon. Also this table will show you what PGM used for and the parameters.




### USERNAME AND PASSWORD OPERATIONS

Username, password and panel password operations are executing under User Settings Menu. Your username and password due to factory settings are admin and 123456. Your panel password is 7777. To change them type the related place and click save button.



### TURNING BACK TO FACTORY SETTINGS

- Remove the connector which is shown by 1 (red arrow) in picture of "Mounting" title.
- Then remove the connector, showed by 2 (blue arrow).
- Insert a jumper to the middle 2 pins where the connector showed by 2 is. 
- Insert the connector number 1 to its place and wait for 15 seconds.
- Remove the connector 1 and remove the jumper that is connected to the connector 2.
- Firstly replace connector 2 then connector 1 to their places.

### MANUFACTURER

**Bilgi Elektronik A.Ş.**

**Address :**

Dudullu Organize Sanayi Bölgesi 1. Cadde İsmet Tarman İş Merkezi No:1 Kat:2 No:32 Ümraniye/İstanbul

**Tel: +90 216 455 88 46 Fax: +90 216 455 99 06**

[www.bilgielektronik.com.tr](http://www.bilgielektronik.com.tr)

Sales: [sales@bilgielektronik.com.tr](mailto:sales@bilgielektronik.com.tr) Technical Support: [support@bilgielektronik.com.tr](mailto:support@bilgielektronik.com.tr)

